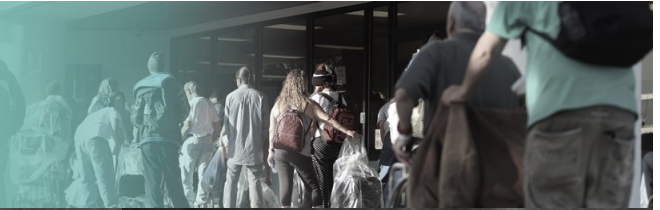




# annual report fy2018



# Homelessness ... a perspective

## WORLDWIDE

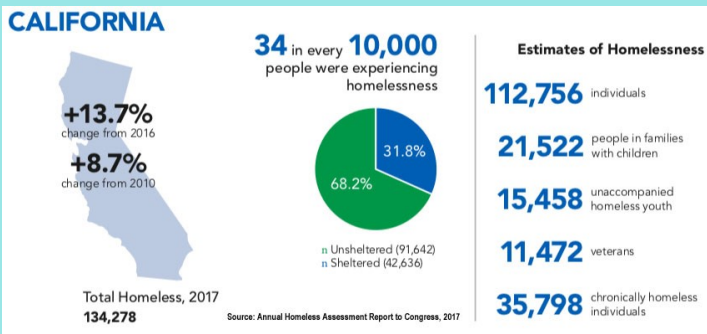
Getting an accurate picture of global homelessness is extremely challenging. Definitions of homelessness vary from country to country. Census data is typically collected based on household and, while most census data takes into account those living in shelters and receiving government aid, census takers struggle to count the “hidden homeless” – those who may be residing in inadequate settlements such as slums, squatting in structures not intended for housing, couch surfing with friends and family, and those who relocate frequently.

## IN THE U.S.

“One in four families that rent in our country are a paycheck away from homelessness, and families can no longer afford safe places to live.”

—Mayors & CEOs for U.S. Housing Investment

## THROUGHOUT THE STATE OF CALIFORNIA



A December 21, 2016 New York Times headline stated:  
**California Today: State's Homeless Population Drives National Increase**

“More than one-quarter of the total homeless population nationwide lives in California, roughly 114,000. The vast majority are “unsheltered” — a more bureaucratic term to describe the thousands living on the streets, under freeways and tucked into grassy fields and parks in cities all around the state. “ Addressing homelessness and the issues it raises costs Santa Clara County some \$520 million every year.

# contents

CEO letter	3
emergency shelter	4
supportive services	6
transitional & permanent housing	8
financial summary	10



## HIGHLIGHTS

### Agency-wide

**4,427 Individuals served**

**505 People housed**

### Boccardo Reception Center (San José)

**149,800 Total Overnight Shelter Stays**

**242 Average Nightly Attendance at BRC**

### Sunnyvale

**Launched Year-round pilot program**

**95% Capacity achieved (of 140 beds)**

### Mt. View

**Launched one-year pilot program for a Cold Weather Shelter for Single Women & Women with Children in Mt. View, partnering with Trinity United Methodist Church**

### Outreach

**3152 Outreach Contacts**

**1,012 Case Management Sessions**

**11,624 Overnight Shelter Stays**

**32 Outreach Client Beds Allocated Nightly**





# a message from our CEO

I am happy to report that this past year marks a true transition for HomeFirst. Last year's work on the

**Strategic Plan** has resulted in a strong, consistent focus on sustainability for the agency—our leadership and our staff.

## 2018-2021 STRATEGIC GOALS

- **Be the preferred provider** of outreach and emergency housing as an onramp to permanent housing and stability.
- **Expand our work with the VA** and other groups to help end — and then prevent — veteran homelessness in our community.
- **Build on our Supportive Services** and utilize best practices to help people who struggle to stay housed.
- **Build HomeFirst's capabilities to meet the urgent need for shelter and services in our community.**

With four years at the helm of HomeFirst I want to consistently focus on the basics—What We Do, Why We Do It and Are We Consistently mindful of our Vision and our Mission.

**OUR VISION:** a community where everyone has a home.

**OUR MISSION:** to confront homelessness by cultivating people's potential to get housed and stay housed.

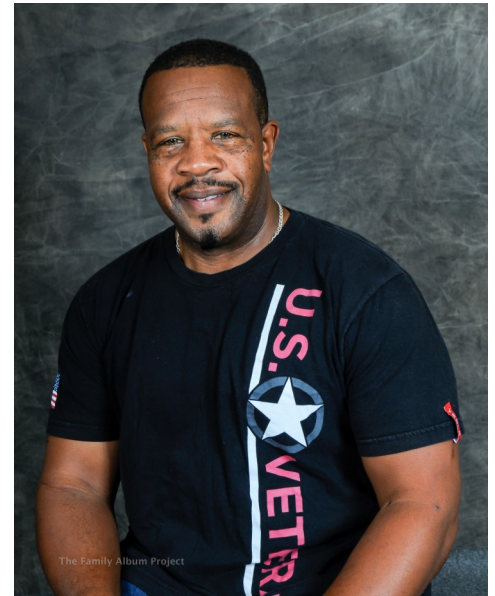
This fiscal year began with the hiring of full-time CFO, **Jim Ptak** who spent a decade previously as CFO at Hospice of the Valley. Now a firmly planted Californian, Jim's 25 years in the non-profit sector began in upstate New York. We are delighted to have Jim as part of the **Executive Leadership Team (ELT)**.



Our **Outreach Teams** have been especially effective, making contact with 3,152 people of all ages who are living unsheltered. With repeated contact, respect and the offer of water, snacks, hygiene kits, clean socks and warm coats, our Outreach Teams develop relationships which, hopefully, lead to more folks accepting services and ultimately being housed.

We've completed the second year of planning and implementation of the **Bridge Housing Community Project** with the **City of San José** and **Habitat for Humanity**. We hope to soon announce finalized project plans and to have at least one site (with 40 sleeping cabins) ready to open in 2019.

By the way, our friends **Virginia and Albert Becker** of **The Family Album & Blue Tarp Projects** created the beautiful portraits to the right and on our cover. These are our clients and shelter guests. These are the faces of homelessness right here in our community. This is who we serve. This is who we house. This is why our work matters.



# emergency shelter

## BOCCARDO RECEPTION CENTER (BRC)

The BRC is the largest homeless services shelter in the County, providing emergency shelter, mental health services, a medical clinic and respite program, life skills workshops, supportive services, and job training, all designed to provide a path to permanent housing. The BRC is also the base for outreach to those identified as “chronically homeless.”

**Over the past twelve months we have been working to align the BRC with nationally recognized best practices as outlined by the National Alliance to End Homelessness.**



## SUNNYVALE FAMILY SHELTER

For the past two decades, HomeFirst has offered an emergency shelter for up to 140 individuals—single adults and families in Sunnyvale. This year the County not only provided a new, spacious location, but also implemented a pilot project to transition this facility from a seasonal Cold Weather Shelter to a year round facility. We await a decision by the County in favor of making this change permanent.



## COLD WEATHER SHELTER PROGRAMS

**HomeFirst has been managing the County’s Cold Weather shelters from mid-October through mid-April for the past two decades in Sunnyvale and Gilroy.**

In addition to the program offered to nearly 300 single adults and children in Gilroy and Sunnyvale, this year, an additional seasonal shelter was offered at Trinity United Methodist Church in Mtn. View for up to 50 single women and adults with children.



## OVERNIGHT WARMING LOCATIONS

The **City of San José** empowered HomeFirst to set up and operate four overnight warming locations—providing a safe place to sleep at locations such as community centers within City limits. These sites (with capacity of up to 30 guests each) are called into action—with 48-hour notice—when inclement weather occurs. Guests are able to drop in at 9pm for the night on a first come, first serve basis and do not need a referral.

### Triggers for Warming Centers

- Forecasted overnight low of 40° or lower with a probability of rain at less than 50%.
- Forecasted overnight low of 45° or lower with a probability of rain of 50% or greater, or persistent rain-fall forecasted for two or more days..

# veterans programs

## Tackling Veteran Homelessness in Santa Clara County

With support from the US Department of Veterans Affairs, our local VA Medical Center and Santa Clara County's Office of Supportive Housing, HomeFirst has become the County's leading provider serving Veterans and their families.

### **HomeFirst Veteran Programs**

**SSVF:** Rapid Re-Housing and Homelessness Prevention for 256 Veterans per year that features support to increase income, address barriers, and secure and maintain permanent housing

**VESP & VESP SC:** Emergency shelter and expansive support services for 36 homeless Veterans per night

### **VRRP: Rapid Re-Housing for Homeless**

Veterans, including those who are over-income for traditional Rapid Rehousing Programs, Veterans of the US Coast Guard and Reserves, as well as Veterans who have been dishonorably discharged.

**THP Low Demand:** Safe Haven transitional housing for Veterans with barriers to traditional programming — see Program Spotlight below.

**Willow Housing:** Case Management for Veterans housed at a permanent supportive housing community located on-site at the VA Menlo Park campus through a partnership with CORE Development and EAH Housing.

### **IMPACT**

**561 Veterans Served**

**218 Veterans Housed**

**372 Sheltered**

**108 Average days to housing**

### **Program Spotlight: THP Low Demand**

In 2016, HomeFirst was one of five sites selected nationally to pilot a Low Demand Model of a Transitional Housing Program (THP). After a successful first year of research, trial and error, we fully implemented the approach in 2017 such that 20 veterans may be served at a time.

Designed for Veterans who have struggled to succeed in traditional services, HomeFirst's THP enables Veterans who have struggled to succeed in traditional services, HomeFirst's THP enables Veterans to engage at their own pace, and couples minimal program requirements with a high level of available supports ranging from drug & alcohol counseling to peer led advocacy groups.

### **Program Spotlight: Singles Rapid Rehousing Program**

In FY2018 HomeFirst launched a new Rapid Rehousing Program sponsored by the Santa Clara County Office of Supportive Housing. (OSH)

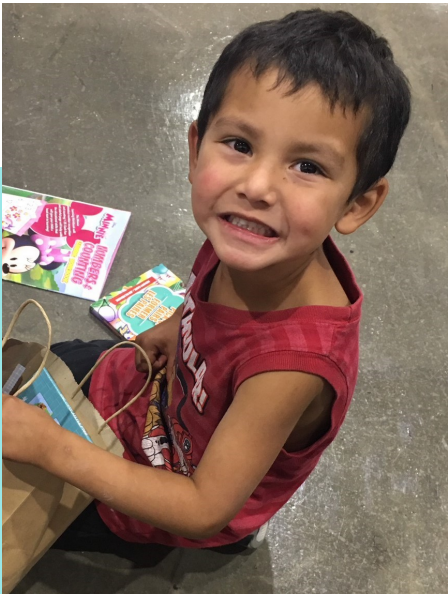
Together, HomeFirst, OSH and the University of Notre Dame's Lab for Economic Opportunities (LEO) engaged in a study to evaluate the effect of rapid re-housing services on housing outcomes for homeless persons. Rapid re-housing provides enrolled clients with a progressive rental assistance subsidy that is meant to ease up to 40 homeless individuals as they transition back into stable housing.



# supportive services

## building blocks to success

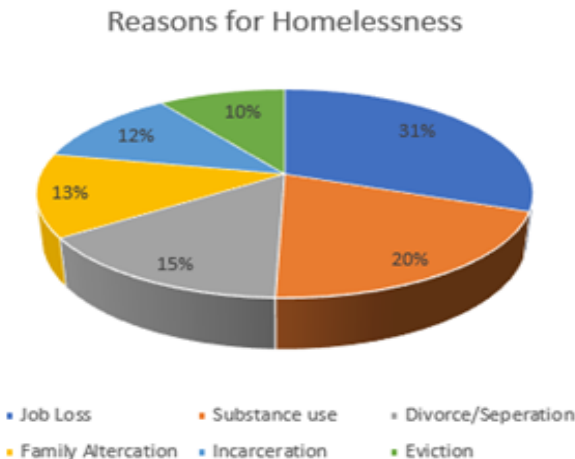
*There is a common misconception about who are “the homeless.” There is an entire spectrum of reasons people become homeless. A single catastrophic medical, accident or employment crisis can create a financial disaster that renders an individual or family without a home or the immediately available resources to return to financial stability. These are our neighbors, coworkers even family members unwilling or unable to share their vulnerability. They will benefit from supportive services including employment assistance, emergency shelter, temporary and transitional housing opportunities.*



*At the other end of the spectrum are the chronically homeless—those requiring permanent supportive housing; those with multiple incidents or prolonged periods of homelessness. Of the chronically homeless only fewer than 24% are dealing with mental illness and/or substance use. For these individuals, comprehensive case management, mental and physical health services (including, when necessary substance abuse counseling) and a well controlled living environment are essential as a viable alternative to living on the streets with ongoing dependency on emergency room resources for health care.*

Supportive services are comprehensive, including extended housing support; case management for adults, families and youth; medical respite; harm reduction; life skills, therapy, and more. Simple pragmatic on-site services include laundry facilities, computer/internet access, healthy meals and snacks as well as regular drives for personal hygiene kits, snack kits, cold weather supply kits, clothing and warm coats benefit shelter guests.

**Addressing the root causes of homelessness helps to inform service delivery and to increase the odds of success.**  
The top causes of homelessness reported by our clients:



When asked what would have prevented their homelessness, respondents reportedly listed:

- employment assistance
- rental assistance
- substance use counseling
- criminal record correction
- mental health services

Supportive services range from intensive case management to maintaining up-to-date community bulletin boards, flyers and social media notices.

### HomeFirst teams up with Starbucks & Feeding America

Ever wonder where those prepackaged sandwiches, salads, yogurt parfaits, pastries and protein snacks go after your local Starbucks closes for the night? Once upon a time they were actually thrown out to make room for the next day’s bounty. Now through this partnership, HomeFirst has a refrigerated van and dedicated driver who retrieves these delicacies from more than two dozen local stores and delivers them to our shelter guests—offering a choice not previously available.



## SOBRATO HOUSE YOUTH CENTER

The **Sobrato House Youth Center** has supported 940 transitional-age youth who have aged out of the foster care system, as well as their children since 2007. From this beautiful historic building we have helped **276 households, including 31 families with children**, in one or more of HomeFirst's transitional housing programs, providing ongoing support with the goal of self-sufficiency.

Today, Sobrato House is home to the **Transitional Housing Placement Plus — Foster Care Program** (THP Plus—FC) which provides non-minor dependents in extended foster care with rental assistance to live independently. The program assists youth with grocery and

transportation, helps with budgeting, developing a savings plan, and working on specific goals. Those with children of their own are included in case management planning. Case management, residential and supportive services are delivered to Young Adults (ages 18 to 25) as a home base in which to build skills so they can be transitioned into the greater community.

### IMPACT

- **Half of the Sobrato House guests entered the program either homeless or at risk of homelessness.**
- **Average stay: 19 months**
- **88% of program participants were foster youth (18-24); remaining 12% were infants or toddlers of these youth.**
- **1,197 case management sessions were provided**
- **72% exited the program into stable housing**

## SUPPORTIVE SERVICES FOR VETERAN FAMILIES

The **Supportive Services for Veteran Families (SSVF)** program provides temporary financial assistance and services to help secure and maintain housing for nearly 30 veteran households who are currently homeless or at immediate risk of losing their current housing.

### Program Spotlight:

#### Support Services for Veteran Families (SSVF)

Veteran Larry, 70 years old, entered the BRC in the Fall. Having served our Country in the US Military, Larry now goes to school full-time to become a substance abuse counselor. He also works at the VA in Palo Alto.

Working with VESP Housing Specialist Jose Toledo, the SSVP Team and VESP Outreach/Case Manager Callie Gregg., Larry was housed in 35 days! And as Callie says, "It never happens that fast!"

"He's the most go-getter individual ever and utilized every resource and more that we offered to him. He really is the reason I am in this position because ANYONE can fall on hard times, but with a little extra support from HomeFirst, someone like Larry is able to get back on his feet."

# housing: transitional & permanent supportive

## FROM HOMELESS TO HOUSED

### *Homeless—Sheltered & Unsheltered*

7,394 homeless people in Santa Clara County were counted in the January 2017 biennial Point-in-Time Count. While hundreds of volunteers—including many HomeFirst Staff—will again participate in the January 2019 count, it is important to note that the reasonable assumption is that this number is low as it involves only a visual count on only two days of a given year.

- **74%** were unsheltered, while
- **26%** were staying in shelters such as HomeFirst’s Boccardo Reception Center (BRC), Sunnyvale, Gilroy and Mtn. View Cold Weather Shelters as well as Overnight Warming Locations (OWLs) in the City of San José.
- Survey respondents said their usual nighttime accommodations were:
  - 36%** public shelter
  - 35%** outdoors—on the streets, in parks or encampments
  - 14%** public buildings unintended for human habitation
  - 8%** motel or hotel
  - 8%** in a vehicle

At the BRC an average of 242 homeless adults spent at least one night in the shelter over the past year for a total of 149,000 Personal Shelter Nights (PSN) over twelve months.

### *Transitional Housing*

Sobrato Family Living Center (Santa Clara) & Boccardo Family Living Center (San Martin) (see page 9) offer families with children under the age of eighteen, a safe and supportive temporary home as they prepare themselves for permanent, independent living. Sobrato House (see page 7) is transitional housing with additional support directed at transitional-age youth so that they might build their financial independence, fulfill educational and employment goals and learn life skills for healthy choices. For the youth who have children of their own, it is a safe place to hone parenting skills as well.



## DEFINITIONS & DISTINCTIONS

**Homeless:** *Individuals and families living in a supervised publicly or private operated shelter designated to provide temporary living arrangements, or with a primary nighttime residence that is a public or private space not designed for or ordinarily used as a regular sleeping accommodation for human beings, including a car, park, abandoned building, bus or train station, airport or camping ground.*

**Emergency Shelter:** *The provision of a safe alternative to the streets. Emergency shelter is short-term, usually for 60 days with a possible 30 day extension.*

**Transitional Housing:** *Housing in which homeless individuals may live up to 18-24 months.*

**Permanent Supportive Housing:** *Long-term, community-based housing that has supportive services for homeless persons with disabilities. This type of supportive housing enable special needs populations to live as independently as possible in a permanent setting.*

***The end goal  
is  
ALWAYS  
permanent housing!***



## FAMILY LIVING CENTERS

Low income housing for families with children under the age of 18 include **John H. Boccardo Family Living Center (BFLC)**, with 26 transitional rental units (San Martin) and **Sobrato Family Living Center (SFLC)**, with 51 units in Santa Clara.. Both allow families to pay a below-market rental rate enabling them to financial resources and resiliency while working to achieve financial stability and permanent housing.

**BFLC:** The bilingual on-site program manager maintains a small pantry of food and household supplies from which residents can “shop” in times of special need. Residents are encouraged to participate in a financial literacy program on budgeting and saving. A computer room, an annual backpack and new shoe drive, along with holiday meals and gifts, are especially popular. Eight units are reserved for migrant farm worker families for part of the year during harvest and for currently homeless families during the rest of the year.

**SFLC:** Through HomeFirst Tutor Club at SFLC, students receive weekly homework assistance and are encouraged to participate in our STEM Summer Camp so that they can begin the new school year running and on point. This program is completely run by volunteers. Backpack and shoe drives, meals at the holidays, and access to various community resources are available through the bilingual property manager. SFLC families also enjoy fun activities with the 49ers and the Sharks.



## PERMANENT SUPPORTIVE HOUSING

**Willow Street Housing**—provides housing with case management and activity coordination to 35 veterans who have been chronically homeless. Chronic homelessness is defined by prolonged or repeated periods of homelessness necessitating the ongoing support of case management and, when necessary medical intervention and/or substance use counseling with consistent supervision, provided on-site. The Willow Street property—on the grounds of the VA center in Menlo Park—is a beautiful and inviting home base for those who served our Country and now need a higher level of residential support.

# financial summary

## Consolidated Statement of Financial Activities

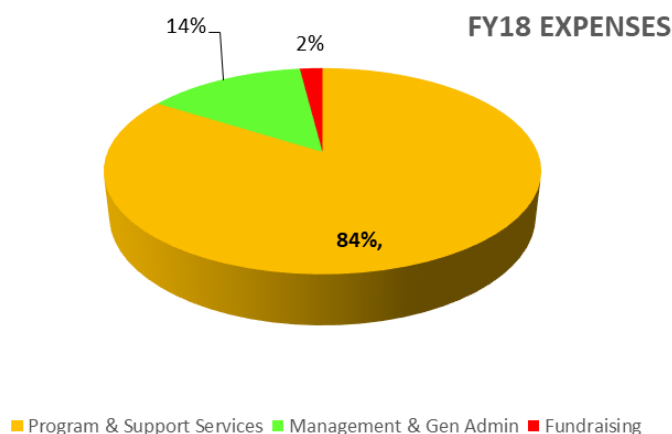
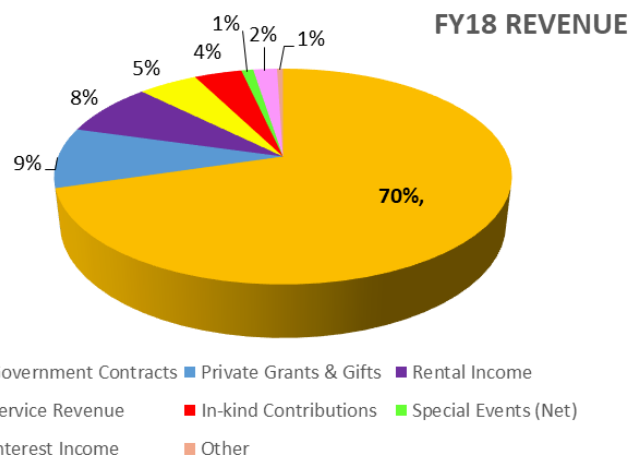
	2018	2017
<b>Total Revenue</b>	<b>14,137,429</b>	<b>12,997,919</b>
<b>Expenses</b>		
Program Services	13,057,518	11,976,474
Support Services	2,453,145	2,639,706
<b>Total Expenses</b>	<b>15,510,663</b>	<b>14,616,180</b>
Change in Net Assets	(1,373,234)	(1,618,261)

### Other Non-Operating Income

Decrease in government liability	135,496	860,411
Net gain on asset disposals	N/A	1,068,588
<b>Total other changes</b>	<b>135,496</b>	<b>1,928,999</b>
Change in net assets	(1,237,738)	310,738
Net assets at beginning of year	17,250,431	16,939,693
Net assets at end of year	16,012,693	17,250,431

## Consolidated Statement of Financial Position

	2018	2017
<b>ASSETS</b>		
Current Assets	2,033,636	1,835,519
Other Assets	23,118,981	24,177,497
<b>Total Assets</b>	<b>25,152,617</b>	<b>26,013,016</b>
<b>LIABILITIES &amp; NET ASSETS</b>		
Current Liabilities	1,991,921	1,736,495
Accrued Interest	3,757,189	3,489,294
Mortgages & notes payable	3,211,955	3,247,532
Government grant repayment	102,199	214,893
Tenant security deposits	76,660	74,371
<b>Total Liabilities</b>	<b>9,139,924</b>	<b>8,762,585</b>
<b>Total Net Assets</b>	<b>16,012,693</b>	<b>17,250,431</b>
<b>Total Liabilities &amp; Net Assets</b>	<b>25,152,617</b>	<b>26,013,016</b>



During the fiscal year ending June 30, 2018, Management continued its investment in infrastructure and process improvements to realign the Organization and assure the Organization would be financially stable. The management and general expenses as a percentage of total expenses are 15% in fiscal year 2017 and 14% in fiscal year 2018.

Fiscal Year	Program	M&G	Fundraising
FY2016	81%	16%	3%
FY2017	82%	15%	3%
FY2018	84%	14%	2%

To review most current Audit & 990, please visit our website: [www.homefirstscc.org](http://www.homefirstscc.org)



# fy18 highlights

building the agency for future sustainability & growth

## Board of Directors & Executive Leadership Team (ELT)

- **Executive Leadership Team** is complete with the hiring of CFO Jim Ptak
- Recruited new members to the HomeFirst's Board of Directors:
  - Jonathan Joannides, Associate at Wilson Sonsini Goodrich & Rosati.
  - Lori Johnson, Senior Counsel/Of Counsel, WageWorks
  - Danielle Davenport, CEO, Global Foundry Group
  - Leonard "Len" Shen, SVP of Compliance, Visa International
- Transitioned former Board Members to the HomeFirst Advisory Council:
  - Linda Chin
  - Leslie Daniels, Esq.
  - Mark Donnelly
  - Suzanne St. John-Crane

### HOMEFIRST ELT

**Andrea Urton,**  
Chief Executive Officer

**Rene Ramirez**  
Chief Operating Officer

**Stephanie Demos**  
Chief Development & Communications  
Officer

**Jim Ptak**  
Chief Financial Officer

## Planning & Operations

- Achieved **Medi-Cal** certification.
- Implemented **Continuous Quality Improvement** (CQI) practice to ensure compliance and quality.
- Achieved **CARF** (Commission on Accreditation of Rehabilitation Facilities) accreditation for veterans' programs.
- Implemented new HR software, **Bamboo**.
- Designed a mission-driven **three-year strategic planning process**.
- Continued to play an integral part in the program design and implementation plan for the Bridge Housing Community Project.
- Active research on Best in Class emergency shelters, including a review and modification of BRC shelter rules and regulations as well as increasing efficiency and reducing environmental footprint of BRC.
- Expanded work with the VA and other programs toward ending Veteran Homelessness.
- Revamped current Case Management model by identifying and incorporating practices that will improve long term impact on clients.

## ***Did you know we count over 1,000 volunteers who help us achieve our goals each year?***

**We are deeply indebted to and grateful for every single volunteer**—executive level volunteers on our Board and Advisory Council, long-time providers of meals for various shelters, those who run blanket, coat and kit drives, corporate groups who come to HomeFirst facilities or, at their own offices—create laundry, snack and cold weather kits for our clients. To everyone who volunteers their time, give an in-kin gift, attends a fundraiser and so much **more — THANK YOU!**

# thank you so very much

## government partners

City of San José  
County of Santa Clara  
City of Sunnyvale  
U.S. Dept. of Housing & Urban  
Development (HUD)  
U.S. Dept. of Veterans Affairs

## corporate partners

Amazon.com (Amazon Smile)  
The Applied Materials Foundation  
Blach Construction Company  
Bon Appetit Management Company  
BPM Foundation  
California Drywall Company  
Cisco Systems Foundation  
The Core Companies  
eBay Foundation  
El Camino HealthCare District  
First Community Bank  
Heritage Bank of Commerce  
Netflix  
NVIDIA  
PayPal  
Samsung Semiconductor  
SanDisk Corporation  
San José Water Company  
Synopsis  
United Health Group  
Walmart Foundation  
Wells Fargo Foundation

## nonprofit, faith-based & community partners

Bellarmino College Preparatory  
Bethel Lutheran Church & School  
Church of the Transfiguration  
Community Seva  
First Community Housing  
Hunger at Home  
Knights of Columbus  
Mission Santa Clara  
The Rallye Club of Silicon Valley  
Saint Lawrence the Martyr Parish  
& Education Center

San José Rotary Club  
Second Harvest Food Bank of  
Santa Clara & San Mateo  
Senior Academy for Education  
Sovereign Order of Knights of St. John  
St. Luke Lutheran Church  
Sunnyvale Presbyterian Church  
Taking it to the Streets  
Unitarian Universalist Fellowship  
of Sunnyvale  
Wesley United Methodist Church

## foundation & donor advised fund partners

Boucher Family Foundation  
Bright Funds Foundation  
Legacy San José Alviso Youth Foundation  
The Richard & Emily Levin Foundation  
Milligan Family Foundation  
Mitchner Family Philanthropic Fund  
The David & Lucile Packard Foundation  
Silicon Valley Community Foundation  
Sobrato Family Foundation  
Sunlight Giving  
Tamaki Foundation  
The Waitte Foundation





# individual contributors

## gifts of \$100,000+

Hurlbut-Johnson Charitable Trusts  
Thomas R. Bettencourt Endowment Fund  
Estate of Father Raymond Kenny

## gifts of \$20,000-\$99,999

Mark & Mari Donnelly



## gifts of \$10,000-\$19,999

Denise & Robert Aitken  
Jorg & Julie Brown  
Brian Carnes  
Steven Kleiman & Helen Bradley  
Scott Lefaver & Elizabeth Yee Lefaver  
Donny & Anne Marie McFadyen  
John Parissenti & Linda Chin  
Harita & Jayendra Patel  
Ed Thrift & Gail Ross Thrift  
Daniel & Charmaine Warmenhoven

## gifts of \$5,000-\$9,999

Paul & Deborah Baker  
Philip Gregory  
Michael & Vicki Pope  
Allen & Cynthia Ruby  
Jeff & Cathie Thermond  
Brad Vroom

## gifts of \$2,500-4,999

Albert & Pamela Aragon  
Howard Berry  
Heinz & Theresia Binder  
Robert Cullen & June Lim  
Nicholas Dinh & Lien Nguyen  
David Fowler  
Stephen & Lynda Fox  
David Fowler  
Stephen & Lynda Fox  
Mick & Fran Galvin  
(Claddagh Construction)  
Joel Greenberg  
Stephen & Lynda Fox  
Joel Greenberg  
Kirk & Kimberly Heinrichs

## gifts of \$2,500-4,999

Rangarajan & Shamala Jayaraman  
Lori & Dean Johnson  
Michael & Rebecca McCullough  
Katherine Mayers  
William & Catherine Noellert  
Peggy O'Laughlin  
Teresa M. Patron  
Derek & Valerie Sanders  
Byron & Stephanie Scordelis  
Bill & Kim Sutherland  
Tom & Linda Waldrop  
Duncan Winn  
Jon Witkin  
Leslie Yates

## gifts of \$1,000-\$2,499

Michael Alvarado  
Bassem Armanyous  
Mary Ellen & Steven Barasch  
James & Alison Barta  
Nandakishore Bhajana  
Paul Billig  
Tracey & Michael Chiappe  
(California Janitorial Supply)  
Michael Logue & Leslie Daniels  
Stephanie Demos  
Mitchell & Lisa Gevelber  
Gary & Nicola Gordon  
Jeffrey Grafton  
Janet & Eric Hagquist  
Jeffrey & Susan Hare  
Ken Hill  
Timothe Hockin

Bret & Sheryl Hydorn  
Clay & Cheri Johnson  
Martha Johnson  
Ata Khan  
Margaret Knox  
Carmen Lambert  
Andrew Lampinen  
Michael & Carol Lavelle  
Philip Letts  
Brian Link  
James Lyon  
Charu Malpani  
Roger & Marilyn March  
Wade & Phyllis Meyercord  
Susannah Sahim Mitchell  
Mitchner Family Philanthropic Fund  
James Naylor  
Anju Pasari  
Laura Robbin  
Ajay Singh  
Marion Steeg  
Adam Sweeney  
Rae Tso  
Peter Ullman  
Jennifer Urmson  
Matthew & Kathy Ready  
Don & Cate Sabatini  
Christopher & Beth Schmidt  
Karl Schweighofer  
Ike & Murphy Shulman  
Ellie Smith  
Andrea Urton  
Aniruddha Vaidya & Neerja Bhatt  
Michael & Mary Van Riper  
Julie Watt  
Sheila Watt  
Stan Watt

# in gratitude

we truly appreciate your generous support!



**We are sincerely grateful for every gift received**—whether it is a pocketful of change donated at the shelter, a check from a very large foundation, or an individual gift of any size.

Unfortunately, we are constrained by space and are only able to include only combined gifts that total \$1,000 or more this year. Please visit our website for a comprehensive list of all donors.

Every year we are the grateful recipients of many anonymous gifts. **For those who do not wish to be named, we extend our thanks as well.**

We make every effort to list names and donation levels correctly.

**If you identify an error, do let us know and we will be sure that corrections are made on the website and in future publications.**



# agency leadership

## 2017—18 Board of Directors

**Scott Lefaver**, Board Chair  
*Cabouchon Properties*

**Nicholas Dinh**, Board Vice Chair & Fund Development Chair  
*Sales Operations & Program Manager, NetApp*

**Tom Waldrop**, Secretary & Governance Chair  
*Director of Communications, Intel Corp. (ret)*

**Jonathan Joannides**, Treasurer & Finance Chair  
*Associate, Wilson Sonsini Goodrich & Rosati*

**David Fligor**, Audit Committee Chair  
*General Counsel & Corporate Secretary, ASSIA, Inc.*

**James Cape**, Fund Development Committee Member  
*Managing Partner, Matrix Solutions*

**Paul Fong**, Governance Committee  
*Professor, Political Science—Evergreen Valley College*

**Kirk Heinrichs**, Governance Committee Member  
*Community Development Director, City of Campbell (ret)*

**Brian Piller**, Fund Development Committee Member  
*Director of Design, Pivot Interiors*

**Leonard ("Len") Shen**, Audit Committee  
*Chief Compliance Officer, Visa, Inc.*

### Joined Board after 07/01/2018:

**Courtney Behm**, Governance & IFTC2019 Committee Member  
*Senior Program Manager, Ingram Micro*

**Rosalyn Behzadi**, Finance Committee Member  
*Chief of Staff, Intel Corporation*

**Hafiza Jameela Stratton**,  
**Melanie Harrell**, Fund Development Committee Member  
*Independent Consultant/Hospitality Management*

**Vidya Raman**, Fund Development Committee Member  
*Director of Product Management, Cloudera, Inc.*

**Oliver Roll**, Finance Committee  
*SVP, Chief Communications Officer, Cisco*

### Non-Board Members Serving on Committees:

**Audit Committee:** Leslie Daniels, Esq., Ken Hill, Chris Lee

**IFTC2019 Committee:** Carrie Washburn (Chair), Linda Chin (Vice Chair)

**Finance Committee:** Mark Donnelly

## Advisory Council

**Michael Pope**, Chair  
*Founding Partner, Internet Dermatology Network*

**Heinz Binder**  
*Partner, Binder & Malter, LLP*

**Linda Y. Chin**  
*Human Resources Consultant (ret)*

**Judy Chirco**  
*Former Vice Mayor, City of San Jose*

**Leslie J. Daniels, Esq.**  
*Tax Attorney, Groom & Cave, LLP*

**Mark Donnelly**  
*VP of Finance, Apple (ret)*

**Philip Gregory**  
*Partner, Cotchett, Pitre & McCarthy*

**Assemblymember Ash Kalra**  
*State of California*

**Jeffrey Hare**  
*Real Estate Attorney and Mediator*

**Mayor Sam Liccardo**  
*City of San José*

**Rabbi Dana Magat**  
*Temple Emanu-El*

**Mary Beth Riley**  
*Principal, Notre Dame High School*

**Mike Rogers**  
*True Influence*

**Suzanne St. John-Crane**  
*CEO, American Leadership Forum—Silicon Valley*

**Larry Stone**  
*Tax Assessor, Santa Clara County*

**Pastor Jon Talbert**  
*Humanitarian Entrepreneur*

**Edgar M. Thrift, Jr.**  
*Community Volunteer*

**County Supervisor Mike Wasserman**  
*Santa Clara County*

# what you can do now

- **Cash Gifts**—donate online now at [www.homefirstscc.org](http://www.homefirstscc.org) or mail contributions to 507 Valley Way, Milpitas, CA 95035.
- **Workplace Giving (Employer Matching)** — learn how your employer or your spouse's employer can double your donation (Tax ID: 94-2684272).

The impact of the following company match and workplace giving campaigns to HomeFirst is significant.

## Does your company match gifts?

### corporate match & workplace giving

Adobe Systems	Intuit Foundation
Alaska Airlines	Juniper Networks
Apple	JustGive
Applied Materials	Kaiser Permanente
Bank of the West	LinkedIn
Benevity	NVIDIA
Cisco Systems	Silicon Valley Bank
Costco Wholesale	Star One Credit Union
Dolby Match Program	Symantec Corporation
eBay Foundation	Truist
Genentech	Visa International
The GE Foundation	YourCause
Google	

Hewlett-Packard Company/Matching Program  
Employees Charity Org. (ECHO) of Northrop Grumman  
UBM Community Connection Foundation

- **Recurring Gifts** — join our Welcome Home Club by scheduling a regular contribution to fight homelessness all year long.
- **Legacy Giving** — leave a lasting legacy of caring for the homeless in our community through a bequest, living trust or another instrument of planning.

For more information about any of these ways to give or for assistance in setting up your gift, contact Chief Development & Communications Officer Stephanie Demos at: [sdemos@homefirstscc.org](mailto:sdemos@homefirstscc.org).

Visit [www.homefirstscc.org](http://www.homefirstscc.org) to learn more about ending homelessness in Silicon Valley and what YOU can do to make an impact NOW.



Sobrato Center for Nonprofits  
507 Valley Way  
Milpitas CA 95035  
408 539 2100  
[info@homefirstscc.org](mailto:info@homefirstscc.org)

## WISH LIST

**Twin-size blankets**

**Full-size towels**

**Individual sized toiletries**

**Powdered laundry soap**

**Adult undergarments & incontinence supplies**

**Adult (solid, neutral colored) sweat pants and sweat shirts— sizes XS to 4X**

**Gift cards—groceries, restaurants, movies & events**

## VOLUNTEER OPPORTUNITIES

**Provide Meal Service: Purchasing groceries, preparing & serving hot, healthy dinner or breakfast to shelter guests:**

**BRC—up to 250**

**Sunnyvale—up to 130**

**Gilroy—up to 140**

**Mt. View—up to 50**